



GENERAL ELECTRIC

U25B

**DIESEL-ELECTRIC
LOCOMOTIVE**

**2500 HORSEPOWER
SPECIFICATION 3030E**



Quality. Style. Spirit™ www.rapidotrains.com



MARKHAM • ONTARIO

GENERAL ELECTRIC U25B

DEALER NAME:

LOCOMOTIVE

HO
SCALE



ORDER DEADLINE **TBD**

Photo courtesy of Greg Sommers

MSRP	No Sound	\$239.95	USD	MSRP	No Sound	\$269.95	CAD
	w/Sound	\$349.95	USD		w/Sound	\$379.95	CAD

General Electric had long been touted as a company that supplied parts for other manufacturers. That would all change with GE's entry into a road-switcher market dominated by EMD and Alco. In the late 1950s, GE's engineers were developing a new V16 engine. What followed was the creation of the U25B road switcher. Available in both high-nose and low-nose variants, GE would sell over 450 U25Bs to a variety of Class I railroads. The U25B would pave the way for future Universal series locomotives.

Many U25Bs lasted into the early 80s on some Class I railroads, others would find their way onto short lines such as TTI. A few made it to museums, such as SP 3100, which was the locomotive that Rapido 3D scanned (as well as spent considerable time backdating the details to reflect an un-rebuilt U25B).

The Rapido U25B locomotive will see features that have never been offered in in any current U25B on the market. From correctly positioned and working class lights (both front and rear), beacons, step lights (only on low nose variants), different phase details, and specific to the road details and parts, along with the trusted silky-smooth drive, this is one locomotive you won't want to miss out on!

The U25B Locomotive features:

- Phase I, II & III units represented in 1st run (Phase IV & other units will come with future runs)
- Signal front window style for low nose units (Double front window in future runs)
- Both low- & high-short hood versions
- Early high- & later-low style side doors
- Road specific details for each model
- Working step lights on low-short hood models
- Different exhaust stacks (depending on roadname)
- Road-specific battery box doors on engineer's side
- Road specific air cleaner boxes on rear
- Working inspection lights on all units
- Lighted control stand inside cab
- Different types of fuel & air tanks (depending upon version)



CANADA: 500 ALDEN ROAD • UNIT 21 • MARKHAM • ONTARIO • L3R 5H5
USA: PO BOX 796 • HIGGANUM • CONNECTICUT • 06441
Tel. 905.474.3314. Fax. 905.474.3325. Visit. www.rapidotrains.com

RAPIDO

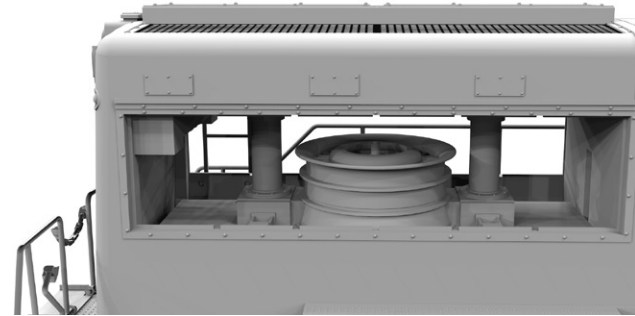
GENERAL ELECTRIC

U25B

DEALER NAME:

LOCOMOTIVE

HO
SCALE



3D renders, details subject to revision.



CANADA: 500 ALDEN ROAD • UNIT 21 • MARKHAM • ONTARIO • L3R 5H5
USA: PO BOX 796 • HIGGANUM • CONNECTICUT • 06441
Tel. 905.474.3314. Fax. 905.474.3325. Visit. www.rapidotrains.com

RAPIDO

GENERAL ELECTRIC U25B LOCOMOTIVE

DEALER NAME:



Great Northern (Empire Builder Scheme)

Road #	Item # (DC/Silent)	Item # (DC/DCC/Sound)
2500	35001 <input type="text"/>	35501 <input type="text"/>
2504	35002 <input type="text"/>	35502 <input type="text"/>
2505	35003 <input type="text"/>	35503 <input type="text"/>
2508	35004 <input type="text"/>	35504 <input type="text"/>



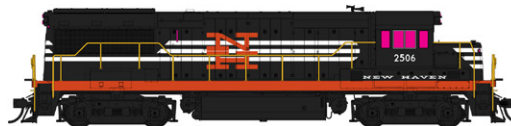
Santa Fe (Pinstripe Scheme)

Road #	Item # (DC/Silent)	Item # (DC/DCC/Sound)
1600	35005 <input type="text"/>	35505 <input type="text"/>
1602	35006 <input type="text"/>	35506 <input type="text"/>
1604	35007 <input type="text"/>	35507 <input type="text"/>
1606	35008 <input type="text"/>	35508 <input type="text"/>



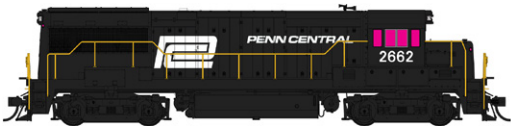
Erie Lackawanna (Early Scheme)

Road #	Item # (DC/Silent)	Item # (DC/DCC/Sound)
2501	35009 <input type="text"/>	35509 <input type="text"/>
2503	35010 <input type="text"/>	35510 <input type="text"/>
2506	35011 <input type="text"/>	35511 <input type="text"/>
2511	35012 <input type="text"/>	35512 <input type="text"/>



New Haven

Road #	Item # (DC/Silent)	Item # (DC/DCC/Sound)
2500	35013 <input type="text"/>	35513 <input type="text"/>
2503	35014 <input type="text"/>	35514 <input type="text"/>
2505	35015 <input type="text"/>	35515 <input type="text"/>
2509	35016 <input type="text"/>	35516 <input type="text"/>



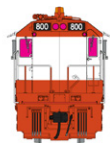
Penn Central

Road #	Item # (DC/Silent)	Item # (DC/DCC/Sound)
2662	35017 <input type="text"/>	35517 <input type="text"/>
2664	35018 <input type="text"/>	35518 <input type="text"/>
2667	35019 <input type="text"/>	35519 <input type="text"/>
2668	35020 <input type="text"/>	35520 <input type="text"/>



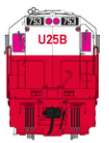
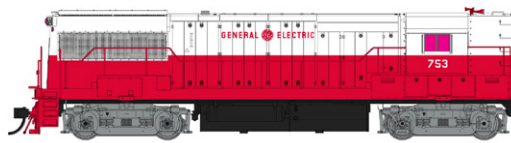
Union Pacific (High Nose)

Road #	Item # (DC/Silent)	Item # (DC/DCC/Sound)
625	35021 <input type="text"/>	35521 <input type="text"/>
626	35022 <input type="text"/>	35522 <input type="text"/>
627	35023 <input type="text"/>	35523 <input type="text"/>
628	35024 <input type="text"/>	35524 <input type="text"/>



St. Louis-San Francisco (Frisco)

Road #	Item # (DC/Silent)	Item # (DC/DCC/Sound)
800	35025 <input type="text"/>	35525 <input type="text"/>
802	35026 <input type="text"/>	35526 <input type="text"/>
803	35027 <input type="text"/>	35527 <input type="text"/>
804	35028 <input type="text"/>	35528 <input type="text"/>



GE Demonstrator (High Nose)

Road #	Item # (DC/Silent)	Item # (DC/DCC/Sound)
2502	35029 <input type="text"/>	35529 <input type="text"/>
2503	35030 <input type="text"/>	35530 <input type="text"/>
2504	35031 <input type="text"/>	35531 <input type="text"/>



GE Demonstrator (High Nose)

Road #	Item # (DC/Silent)	Item # (DC/DCC/Sound)
753	35032 <input type="text"/>	35532 <input type="text"/>

MSRP No Sound **\$239.95** USD No Sound **\$269.95** CAD
w/Sound **\$349.95** USD w/Sound **\$379.95** CAD



CANADA: 500 ALDEN ROAD • UNIT 21 • MARKHAM • ONTARIO • L3R 5H5
USA: PO BOX 796 • HIGGANUM • CONNECTICUT • 06441
Tel. 905.474.3314. Fax. 905.474.3325. Visit. www.rapidotrains.com

RAPIDO