



**HO  
SCALE**

# BAY AREA RAPID TRANSIT LEGACY FLEET (A, B, C CARS)

In celebration of the 50th anniversary of Bay Area Rapid Transit (BART) in 2022, Rapido Trains is very pleased to be bringing you the BART Legacy Fleet in HO Scale! Produced in close collaboration with the Bay Area Rapid Transit, this represents Rapido's first foray into the rail-based rapid transit market!

Since its opening in 1972, Bay Area Rapid Transit trains have moved commuters and riders around the San Francisco Bay Area using these iconic cars. These pioneering cars were designed specifically to reduce association with aging transit equipment used in other cities. Instead of using traditional railcar manufacturers, BART signed a contract with Rohr Industries to create their first transit vehicles and contracted industrial design firm Sundberg Ferar to develop the trains' futuristic look.

Besides being recognized for its status as a ground-breaking achievements of civil engineering, BART is also known for its roster of very distinctive rolling stock. The original cab and center cars (A Cars and B cars) built by Rohr Industries between 1968 and 1975 were mechanically identical, with the exception of the cab overhanging one end of the A cars. Despite being the face of the system, the streamlined fiberglass cab became an operational issue as they limited flexibility in building trainsets. To resolve this, the first of the "C Cars" were delivered in 1987 by Alstom, featuring a more traditional flat cab, allowing them to be used both on the ends as well as in the middle of the consist. Additional C Cars were built by Morrison-Knudsen between 1994 and 1996.

BART has run these trains for 50 years, with the external appearance largely unchanged since the initial concepts toured around the Bay. With BART structures paralleling the Santa Fe, Southern Pacific, and Western Pacific's Bay Area lines, these have continually served as a sharp contrast to the often grimy freight service through the area, with sleek aluminum cars flying past freight drags and commuter service on elevated viaducts paralleling the railroad right-of-way.

## Each Rapido BART Car features:

- Designed from original blueprints, design drawings and field measurements.
- Track-powered flicker-free interior lighting compatible with DC and DCC layouts.
- Directional lighting, including headlights and red tail lights.
- NEM-style close-coupling system, so your cars always remain as close as possible through any trackwork.
- Minimum 18" radius (22" radius preferred).
- Full, multi-color interior detailing.
- Low-profile drive system in A and C cars allowing for a complete interior with no visible motor.
- Full underbody detail including separate electrical lines, conduit and equipment boxes.
- Highly-detailed, non-operating couplers on A and C cars.
- DCC-equipped models feature accurate sound recordings.

## MSRP

A-B-B-A Train	DC	\$549.95 USD	\$659.95 CAD
	DCC	\$749.95 USD	\$899.95 CAD
C Cars	DC	\$229.95 USD	\$279.95 CAD
	DCC	\$339.95 USD	\$409.95 CAD
Individual B Cars		\$89.95 USD	\$109.95 CAD
A Car + Display Case		\$149.95 USD	\$179.95 CAD



CANADA: 500 ALDEN ROAD • UNIT 21 • MARKHAM • ONTARIO • L3R 5H5  
USA: PO BOX 796 • HIGGANUM • CONNECTICUT • 06441  
Tel. 905.474.3314. Fax. 905.474.3325. Visit. [www.rapidotrains.com](http://www.rapidotrains.com)

**RAPIDO**

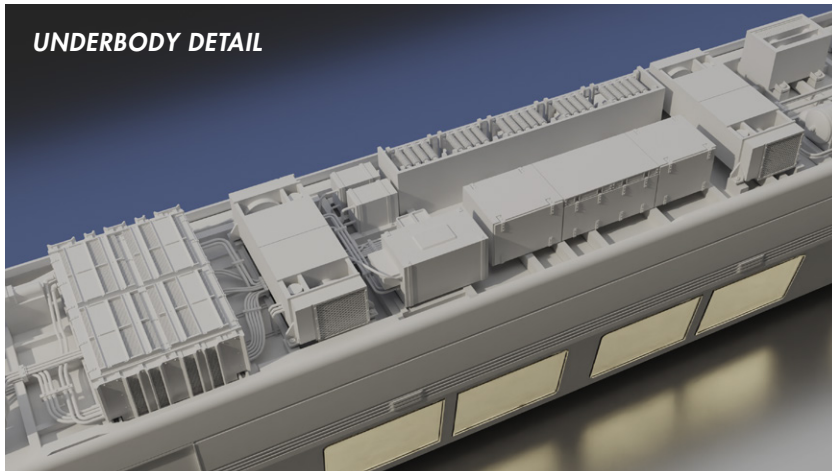
**HO  
SCALE**

# BAY AREA RAPID TRANSIT LEGACY FLEET (A, B, C CARS)

DEALER  
NAME



A CAR



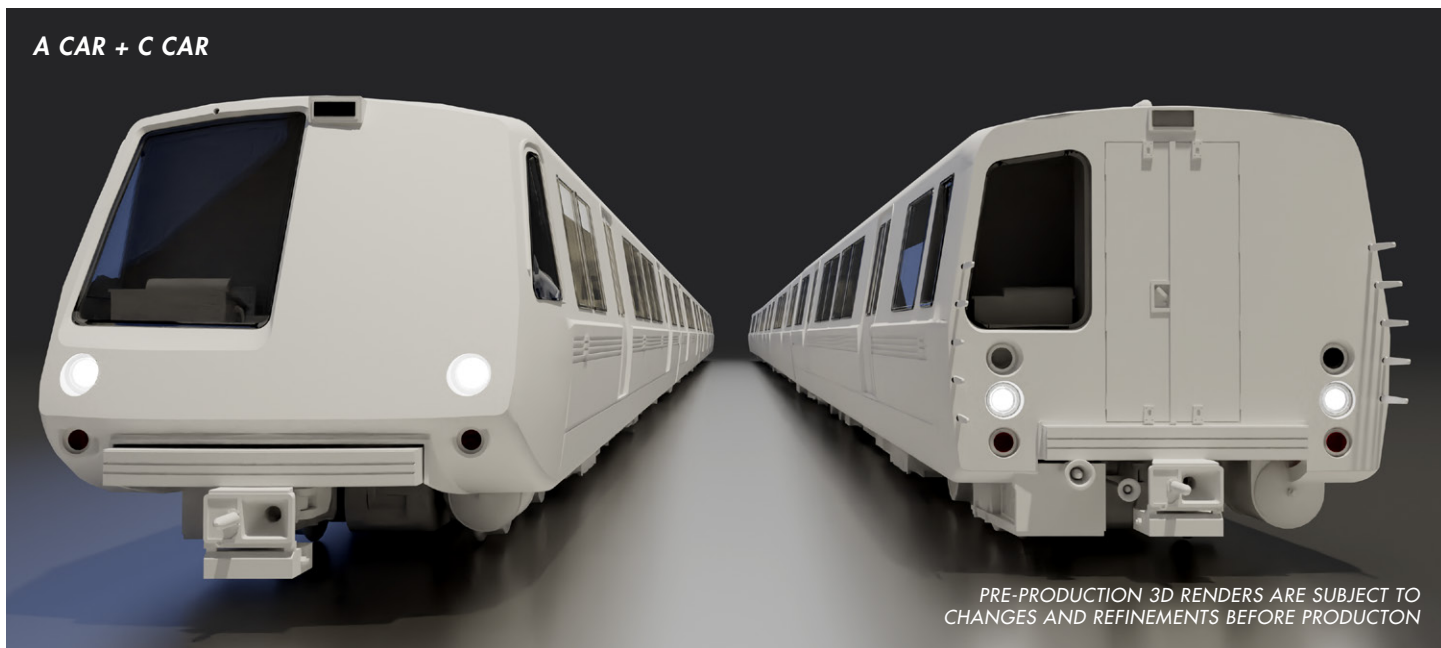
UNDERBODY DETAIL



C CAR



B CAR



A CAR + C CAR

PRE-PRODUCTION 3D RENDERS ARE SUBJECT TO  
CHANGES AND REFINEMENTS BEFORE PRODUCTION



CANADA: 500 ALDEN ROAD • UNIT 21 • MARKHAM • ONTARIO • L3R 5H5  
USA: PO BOX 796 • HIGGANUM • CONNECTICUT • 06441  
Tel. 905.474.3314. Fax. 905.474.3325. Visit. [www.rapidotrains.com](http://www.rapidotrains.com)

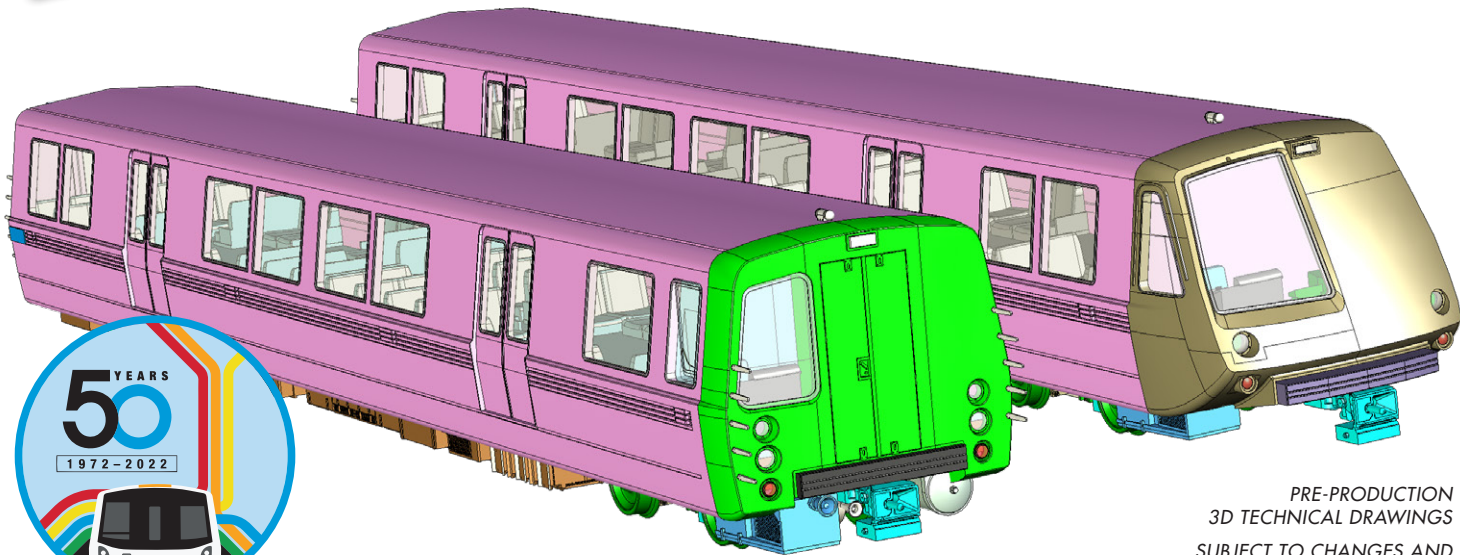
**RAPIDO**





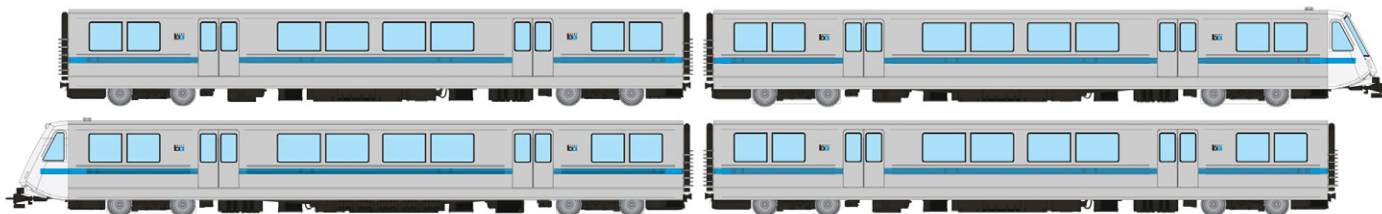
# BAY AREA RAPID TRANSIT LEGACY FLEET (A, B, C CARS)

DEALER  
NAME



PRE-PRODUCTION  
3D TECHNICAL DRAWINGS  
SUBJECT TO CHANGES AND  
REFINEMENTS BEFORE PRODUCTION

## 4-CAR TRAIN (POWERED A CARS, UNPOWERED B CARS)



DC/Silent SKU 204001   
**\$549.95 USD** **\$659.95 CAD**

DC/DCC/Sound SKU 204501   
**\$749.95 USD** **\$899.95 CAD**

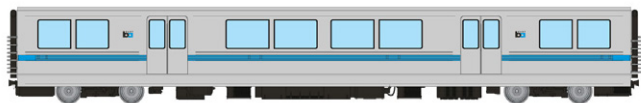
## C CAR (POWERED)



DC/Silent SKU 204002   
**\$229.95 USD** **\$279.95 CAD**

DC/DCC/Sound SKU 204502   
**\$339.95 USD** **\$409.95 CAD**

## B CAR (UNPOWERED)



SKU 204003   
**\$89.95 USD** **\$109.95 CAD**

## A CAR (UNPOWERED) + DISPLAY CASE



SKU 204004   
**\$149.95 USD** **\$179.95 CAD**



CANADA: 500 ALDEN ROAD • UNIT 21 • MARKHAM • ONTARIO • L3R 5H5  
USA: PO BOX 796 • HIGGANUM • CONNECTICUT • 06441  
Tel. 905.474.3314. Fax. 905.474.3325. Visit. [www.rapidotrains.com](http://www.rapidotrains.com)

**RAPIDO**