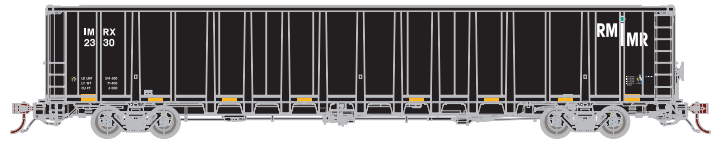


American Iron & Metal



ATHGN6718	AIMX #20149	Era: 2020s+
ATHGN6719	AIMX #20188	
ATHGN6720	AIMX #20100/21225	
ATHGN6721	AIMX #20157/20176	

IMRX



ATHGN6722	IMRX #2330	Era: 2020s+
ATHGN6723	IMRX #2339	
ATHGN6724	IMRX #2287/2337	
ATHGN6725	IMRX #2298/2317	

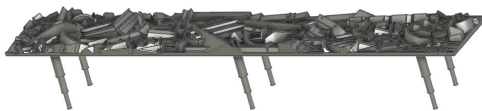
Texas-Louisiana Producing & Carbon Co



ATHGN6726	TLPX #2232	Era: 2020s+
ATHGN6727	TLPX #2248	
ATHGN6728	TLPX #2216/2250	
ATHGN6729	TLPX #2221/2277	

MODEL FEATURES:

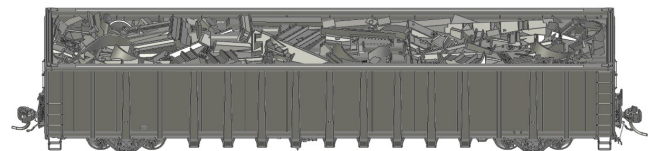
- Separately applied metal Grab Irons
- Etched Metal Crossover Platforms (where applicable)
- Accurate Brake Piping (Metal and Plastic components)
- Bent wire coupler cut levers
- Rubber train line hoses
- Includes removable scrap load
- Screw-mounted 100-ton roller bearing trucks
- Body-mounted McHenry® lower shelf knuckle couplers
- Machined metal wheels with RP25 contours
- Accurately painted and printed for prototypical realism
- Highly detailed, injection-molded body
- Weighted for optimum performance
- Operates on all popular brands of track
- Minimum Radius 11" — Recommended Radius 15"



Drawing of removable scrap load

PROTOTYPE AND BACKGROUND INFO:

Starting in the late 2010s, National Steel Car began construction of these giant 6,000 cu ft capacity gondolas. These exquisite Athearn Genesis models capture all of the details and variations of their prototypes. Our state-of-the-art tooling replicates the detailed bodies and massive dimensions of the prototypes. Separate details include full brake rigging, grab irons and etched crossover platforms. Add the definitive NSC 6000 gondolas to your modern roster with these all-new Athearn Genesis cars.



Drawing of removable scrap load in car

\$44.99 INDIVIDUAL | \$79.99 2-CAR SET

These items are subject to Horizon's MAP policy

Orders Due: 01.27.23
ETA: FEBRUARY 2024