



Atchison, Topeka & Santa Fe with Pipe Load
Road Number 170902



This GA-48-class 65' mill gondola with Bettendorf trucks was designed to haul finished structural steel shapes and other bulky loads, and featured drop ends that allowed the gondola to carry loads longer than the car. Founded in 1859, Santa Fe was one of the largest railroads in North America up until 1996, when it merged with Burlington Northern to form BNSF.



Requires a minimum 15" turn radius.

#107 00 011...\$32.95

Great Northern
Road Number 18963



This single door 40-foot boxcar with Bettendorf trucks was built for Great Northern, and later shopped and repainted into the Big Sky Blue paint scheme. Great Northern was a Class 1 railroad founded in 1881 and eventually was merged with Northern Pacific, and others, to form Burlington Northern Railroad in 1970.



#024 00 550...\$28.90

Atchison, Topeka & Santa Fe
Road Numbers 82076, 82142



These GA-105-class covered hoppers with Bettendorf trucks were built in 1957 in a series of 500 cars.



#095 00 051...\$45.95
#095 00 052...\$45.95

War of the Worlds #6
Road Number 1900



Field artillery strike the first blow against the Martian invaders. The classic science fiction novel *War of the Worlds*, first published by H.G. Wells in 1898, chronicles an Earth invasion by Martians, and humanity's attempt to retake the planet.



#039 00 274...\$26.95

NW/ex-NKP
Road Number 269079



This 50' fixed end gondola with Barber Roller Bearing trucks was built by Pullman-Standard in April 1964 for Nickel Plate Road. It was later absorbed into the Norfolk & Western system, and finally became part of Norfolk Southern.



Norfolk Southern Family Tree Car #4
#105 44 620...\$27.90
Laser cut deck included but not installed.

**Southern
Road Number 43698**



This 7,400 cubic-foot 60' box car with Barber Roller Bearing trucks was serviced in 1987 and repainted into the Claytor paint scheme. Southern Railway was a Class 1 railroad that operated over 6,000 miles of track across the southern United States from 1894-1982. Today, it is now part of the Norfolk Southern system following a 1980 merger with Norfolk & Western Railway.



#104 00 120...\$30.95

**Pennsylvania Railroad with Coal Load
Road Numbers 180658, 180742**



These three-bay open hopper with Barber Roller Bearing trucks were built in March 1964 for the Pennsylvania Railroad, and featured a prominent yellow circle on the car side, signifying the cars were for unit train service.



#108 00 041...\$28.90

#108 00 042...\$28.90

**Norfolk & Western
Road Number 602017**



This 7,400 cubic-foot 60' box car with Barber Roller Bearing trucks was serviced in 1987 and repainted into the Claytor paint scheme. Norfolk & Western was a Class 1 railroad headquartered in Roanoke, Virginia. Today, it is now part of the Norfolk Southern system following a 1980 merger with Southern Railway.



#104 00 130...\$30.95

**War of the Worlds #6
Road Number 1900**



Field artillery strike the first blow against the Martian invaders. The classic science fiction novel *War of the Worlds*, first published by H.G. Wells in 1898, chronicles an Earth invasion by Martians, and humanity's attempt to retake the planet.



#518 00 844...\$26.95

**Canadian National Buffalo Boxcar 4-Pack
Road Number 429004, 429049, 429053, 429245**



Built in the mid-1950s to carry newsprint, these 40' boxcars with Bettendorf trucks were converted to carry grain in the late 1980s, in a project financed by the Government of Canada. They were known as "Buffalo Boxcars." Canadian National is one of the largest railroads headquartered in Canada, with over 20,000 miles of track and service from Canada into the United States.



Available Mid-Month
Pre-ordered March 2023
Rendering shown for representation.

Packaged in Foam Nest #993 00 214...\$114.95
Packaged in Jewel Case #983 00 214...\$129.95

Southern Pacific® Weathered Caboose 3-Pack Road Numbers 1077, 1084, 1093



These Southern Pacific cabooses were built at the Los Angeles Shops in 1941 in a group of 45 cars. Southern Pacific was a Class 1 railroad from 1865 until 1996, when it was absorbed by Union Pacific after falling on hard times financially in the 1970s and 1980s.



Available Mid-Month
Pre-ordered April 2023
Packaged in Jewel Case #983 05 054...\$114.95

Medford, Talent, & Lakecreek Freelance RR 70's/80's



Built in September of 1944, this EMD FT locomotive was a 1,350 horsepower diesel-electric locomotive and was purchased by the Medford, Talent & Lakecreek as a replacement for their aging steam locomotives. MT&L's small fleet of FT's quickly became their primary road and switching power and were used for decades until being repainted in the early 1970s and eventually retired.

Built in 1947, this caboose with Bettendorf trucks was shopped several times, receiving roof upgrades, interior reconditioning, and new amenities. It replaced older wooden cabooses, and served the Medford, Talent & Lakecreek on local and transfer trains. It was repainted in the early 1970s and retired from most revenue freight service in the 1980s.



Road Number 1976
#987 01 812...\$119.95

Road Number 2023
#100 00 590...\$33.95

Available Mid-Month
Pre-ordered April 2023

Rendering shown for representation.

Medford Talent & Lakecreek Reefer Cars



Built by Medford, Talent & Lakecreek in 1926, these cars with Bettendorf trucks served various orchards and fruitpackers around the Rogue Valley. The Medford, Talent & Lakecreek Railroad was established in 1918 to serve the communities throughout Oregon's Rogue Valley, helping move commodities to the Southern Pacific interchanges.



MT&L - Sunday Best Pears
Road Number 5866
#049 00 944...\$28.95



MT&L - Round Robin Pears
Road Number 5869
#049 00 945...\$28.95



MT&L - Dunbar Pears
Road Number 5857
#049 00 946...\$28.95

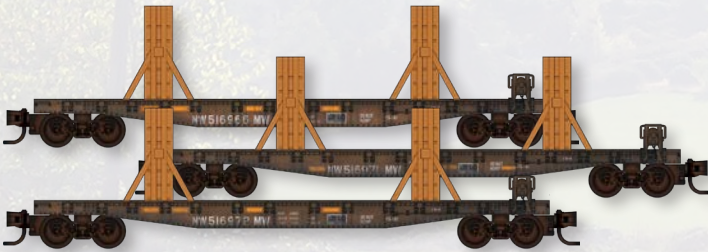
Available Mid-Month
Pre-ordered February 2023

Renderings shown for representation.

Norfolk Southern Ribbon Rail Weathered Packs & Single



These Norfolk Southern Maintenance-of-Way flat cars with Roller Bearing trucks have been employed in a continuous welded rail capacity. Also known as "ribbon rail," this innovation has replaced most of the traditional 39' sections of jointed rail across North America. Ribbon rail often comes in ¼ mile lengths, and is preferred by railroads because it increases safety, wears more evenly and lasts longer, and eases maintenance requirements. Today, NS is one of the largest Class 1 Railroads with over 30,000 employees and operates nearly 22,000 miles of track in the Eastern and Midwestern United States.

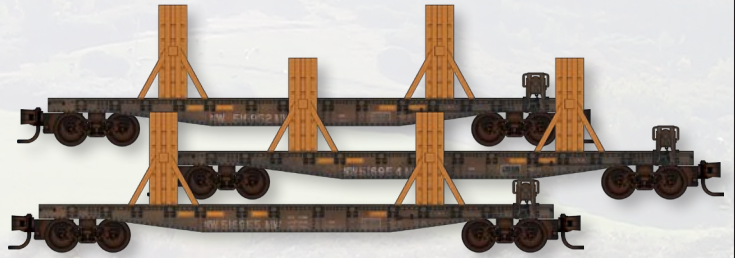


NS Ribbon Rail 3-Pack #1

Road Numbers 516966, 516971, 516972

Packaged in Foam Nest #993 02 220...\$95.95

Packaged in Jewel Case #983 02 220...\$107.95



NS Ribbon Rail 3-Pack #2

Road Numbers 516952, 516954, 546955

Packaged in Foam Nest #993 02 221...\$95.95

Packaged in Jewel Case #983 02 221...\$107.95



NS Ribbon Rail Center Car 2-Pack

Road Numbers 516947, 516948

Packaged in Foam Nest #993 02 222...\$64.95

Packaged in Jewel Case #983 02 222...\$73.95



NS Ribbon Rail Single

#045 44 670...\$31.95

Multi-media kit.
Renderings shown for representation.

Ribbon Rail Available Separately From
https://www.nscalekits.co.uk/welded_rail.html

Available Mid-Month
Pre-ordered February 2023

Heavyweight Depressed-Center Flat Cars & Specialty Load Packs



In the mid-1970s, the Department of Defense acquired 23 depressed center flat cars with Buckeye trucks and eventually renumbered them into series 39810-39832. They are equipped with a permanently applied container and framework as an enclosure for nuclear waste cargo.

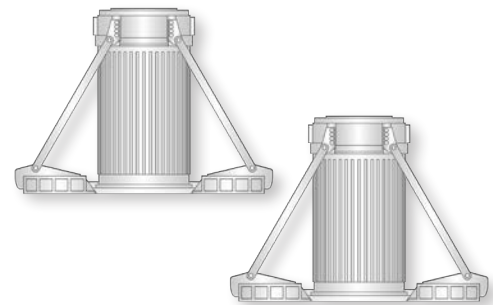


Department of Defense

Road Numbers 39810, 39814

#109 00 271...\$31.95

#109 00 272...\$31.95



Nuclear Waste Container Load 2-Pack

#499 43 818...\$19.95

This heavyweight depressed-center flat car with Buckeye trucks was built in the mid-1990s and used to carry oversize and heavy industrial loads, such as transformers, stationary power plants, and substation equipment. The lowered center of the car allows for necessary overhead clearance for the lading.



TTX

Road Numbers 130529, 130532

#109 00 143...\$31.95

#109 00 144...\$31.95



Transformer Load 2-Pack

#499 43 817...\$14.95

Renderings shown for representation.

Pre-ordered March 2023
Available Mid-Month

Alaska Anniversary Car



Accepting Pre-Orders Through August 31st

Alaska Railroad is a Class II railroad that was founded in 1914, and was completed in 1923. It currently runs between Seward and Fairbanks along 656 miles of track. The ARR serves numerous communities with both freight and passenger service, and is a major tourist attraction in the summer months. In 2023, the ARR celebrated 100 years of operation.



Rendering shown for representation.

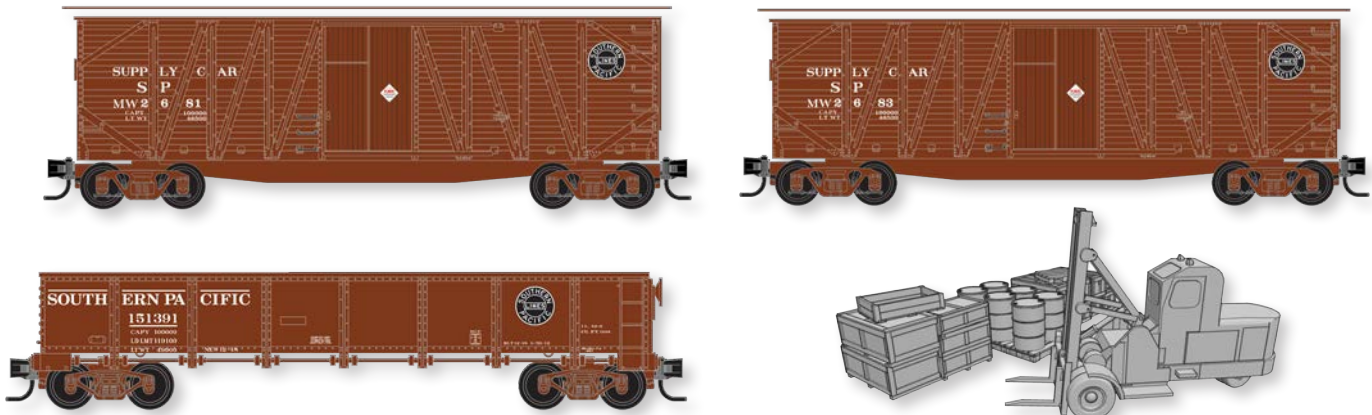
Available December 2023
#104 00 140...\$28.95

Southern Pacific® Supply Car 3-Pack + Accessories



Accepting Pre-Orders Through August 31st

Southern Pacific and its subsidiaries had a territory that spanned from the Pacific coast, down thru Mexico and east as far as New Orleans. It required constant upkeep, so older cars that were still roadworthy were converted to Maintenance of Way duties including remote living quarters, wreck recovery and supply. Our set represents three such cars used to get specialized supplies to work sites and return with repairs or discarded parts to nearby yards.



Multi-media kit. Includes unassembled, undecorated accessories. Renderings shown for representation. SP is a registered trademark of the Union Pacific Railroad.

Available January 2024

Packaged in Foam Nest #993 02 235...\$81.95
Packaged in Jewel Case #983 02 235...\$93.95

PFE® 4-Car Runner Pack



Accepting Pre-Orders Through August 31st

The Pullman Company built over 6,000 R 30-13 wood refrigerator cars for Pacific Fruit Express between 1923 and 1936 to help move produce from the fields of Central and Southern California to feed the exploding population centers along the Pacific Coast and point east. These particular cars feature the Union Pacific Railroad Overland shield that adorned cars utilized the road during the early part of the 20th Century.



Available January 2024

Packaged in Foam Nest #993 00 219...\$114.95
Packaged in Jewel Case #983 00 219...\$129.95

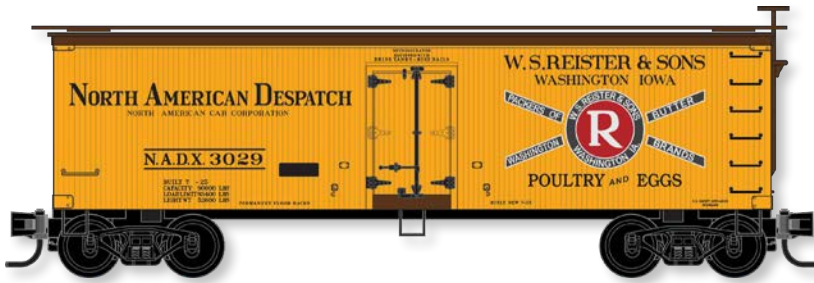
Rendering shown for representation. PFE is a registered trademark of the Union Pacific Railroad.

NEW SERIES!

Poultry & Eggs Series



In the 1800s through the mid-1900's, shipments of eggs, butter and poultry were growing in demand. With the advent of ice cooled refrigerator car, these products were able to ship with relative ease to urban markets across the country.



Each Car
\$29.95



Available in N and Z scale
6 Car Series Begins December 2023

N Scale Renderings shown for representation.

War of the Worlds Loco and Caboose

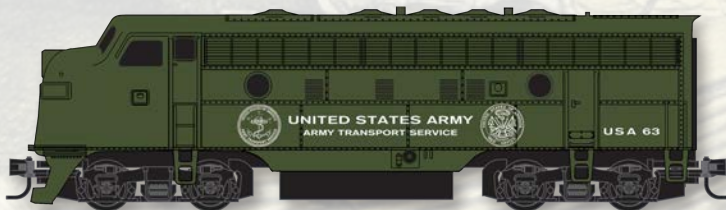
Accepting Pre-Orders Through August 31st



N Scale
War of the Worlds Loco
#987 01 913...\$124.95



N Scale
War of the Worlds Caboose
#100 00 600...\$34.95



Z Scale
War of the Worlds Loco
#980 01 550...\$119.95



Z Scale
War of the Worlds Caboose
#535 00 510...\$29.95

Renderings shown for representation.

Available December 2023

Medford, Talent & Lakecreek Dinner Excursion Sets



The Medford, Talent & Lakecreek Railroad, while primarily a freight railroad, did operate a number of dinner excursion trains to various landmarks and destinations, including Crater Lake, the Oregon coast, and the northern California Lava Beds. The Medford, Talent & Lakecreek Railroad was established in 1918 to serve the communities throughout Oregon's Rogue Valley, helping move commodities to the Southern Pacific® interchanges. The success of the modest shortline revolved around serving various agricultural, timber, and manufacturing industries.

Era: 1930s - 1950s



4-Pack Available January 2024

Packaged in Foam Nest #993 02 237...\$129.95
 Packaged in Jewel Case #983 02 237...\$144.95

Era: 1970s - 1980s



4-Pack Available February 2024

Packaged in Foam Nest #993 02 236...\$129.95
 Packaged in Jewel Case #983 02 236...\$144.95

Renderings shown for representation.

July Weathered Cars



Union Pacific® 4-Pack

Road Numbers 75966, 75997, 75956, 76029

Packaged in Foam Nest #993 05 052...\$145.95
 Packaged in Jewel Case #983 05 052...\$160.95

UP® is a registered trademark of the Union Pacific Railroad.



CNW®/ex-RI 2-Pack

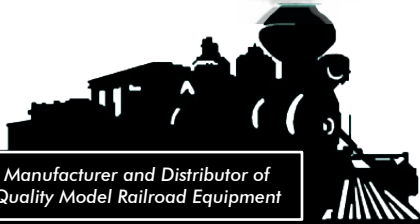
Road Numbers 718115, 718463

Packaged in Foam Nest #993 05 043...\$65.95
 Packaged in Jewel Case #983 05 043...\$74.95

MICRO-TRAINS[®] LINE

351 Rogue River Parkway
 P.O. Box 1200
 Talent, OR 97540-1200
 U.S.A.
 Email: mtl@micro-trains.com

First Class



Manufacturer and Distributor of
 Quality Model Railroad Equipment

©2023 Micro-Trains Line Co. • 351 Rogue River Parkway • P.O. Box 1200 • Talent, OR 97540-1200 U.S.A. • 541.535.1755 • Fax: 541.535.1932
 Email: mtl@micro-trains.com • Visit us at: www.micro-trains.com

The B&O, Seaboard Air Line, Seaboard Coast Line, Chessie, Chesapeake & Ohio, Louisville and Nashville, and Western Maryland are the property of CSX Transportation Inc.



Membership has its benefits!

If you are an N Scale Enthusiast, and every Ntrakker is – You should share your passion for your favorite scale by being a member of The N Scale Enthusiast!

Working to preserve the history of N Scale, and grow the scale along with our friends at Ntrak, we offer mega benefits to the membership:

- A very informative magazine 5 times a year!
- Manufacturers and Latest releases in every issue
- Member only Special Runs both prototype and fantasy
- Multi Medium Special Runs that are scratch-built on a grand scale
- Member listings in the Trovestar peer to peer marketplace
- Annual Membership car included at no extra charge
- National N Scale Convention annually
- Free Classified Ads- For Sale and Wanted listings
- Web Resources



The N Scale Enthusiast
 P.O. Box 30489
 Savannah, GA 31410

www.NScaleEnthusiast.com

Join up for more
 N Scale Fun!



Buffalo & Pittsburgh 35th Anniversary Road Number 8823



The Buffalo & Pittsburgh Railroad is a Class II railroad operating in Pennsylvania and Western New York, with main interchanges in Buffalo, Erie, New Castle, Freeport, and Driftwood. The B&P, a Genesee & Wyoming subsidiary, began operations in 1988 across right-of-ways previously owned by the Baltimore & Ohio Railroad, and is celebrating 35 years in operation in 2023.



Pre-ordered May 2023
 Mid-Month
 #102 00 230...\$29.95

Rendering shown for representation.