

# The **MICRO-TRAINS<sup>®</sup> LINE** Micro-News<sup>®</sup>

## Pennsylvania Road Number 257776



This PS-2 hopper with Bettendorf trucks was built in August of 1957 in a series of 400 cars. The Pullman-Standard all-welded steel, 2,003 cubic-foot two bay covered hopper would become one of the most popular cars of its type with railroads and private industry. It was designed to haul everything from powdered chemicals, to grains, to construction materials such as sand or cement. Versatile and durable, this car continued in revenue service into the early 2000's, and was sometimes found later in MOW service.



#095 00 062...\$45.95

## Great Northern Road Number 79033



This 65' mill gondola with Roller Bearing trucks was built for Great Northern Railway in the mid 1950s and was designed to haul finished structural steel shapes and other bulky loads. It later made its way to Burlington Northern's fleet, and was repainted in the 1970s. It had a 1,768 cubic foot capacity and featured drop ends that allowed the gondola to carry loads longer than the car. Burlington Northern was formed through the mergers of Great Northern and Northern Pacific in 1970, and then merged with ATSF in 1995 to form BNSF.

### With Pipe Load!



#107 00 051...\$33.95

## Conrail Road Number 223031



Built in late 1977 by Berwick Forge & Fabricating, this 60' B63A-class excess height boxcar with Barber Roller Bearing trucks belonged to Conrail series 223001-223122, and had a capacity of 7,100 cubic feet. New York Central merged with its rival, the Pennsylvania Railroad, in 1968 to form Penn Central, which went bankrupt two years later and was merged into Conrail in 1976.



#103 00 210...\$33.95

## Union Pacific<sup>®</sup> Road Numbers 58773, 58779



Built in 1968, these F-70-21 flat cars with Roller Bearing trucks had a 77-ton capacity and featured a cushioned underframe. Union Pacific continues to operate today as one of the largest Class 1 railroads in North America with over 32,000 miles of track.



#045 00 721...\$28.90

#045 00 722...\$28.90

UP<sup>®</sup> is a registered trademark of the Union Pacific Railroad.

## Wescott & Winks Road Number 1043



Frank Wescott and Ben Winks formed a partnership in 1903, founding the Wescott & Winks Packers and Shippers company, out of Sumner, Iowa. The W&W company specialized in produce, butter, eggs, poultry and various grains. This 36' wood sheathed reefer was built in 1927 and advertised W&W special selected eggs.



**Poultry & Egg Series #1**

#058 00 600...\$29.95

## Southern ex-Central of Georgia Road Number 992376



This 40-foot boxcar with Bettendorf trucks was built in the late 1930s for Central of Georgia. It later made its way to the Southern Railway roster, and was hastily patched without being repainted. The Southern Railway was a Class 1 railroad based in the Southeast United States from 1894-1982.



**SIDE B**

**Norfolk Southern Family Tree Car #8**

#020 44 377...\$28.95

**Illinois Central Gulf**  
Road Number 905057



This 110,000-pound capacity flat car with Bettendorf trucks belonged to ICG series 905028-905299. Illinois Central Gulf was formed after the merger of Gulf, Mobile & Ohio and the Illinois Central in 1972. Eventually, Canadian National purchased the railroad in 1998.



**#045 00 700...\$28.90**

**Erie Lackawanna**  
Road Number 82875



Built in the mid-1940s, this 40' boxcar was classified XF and used exclusively for food loading. Erie Lackawanna was formed through the 1960 merger of the Erie Railroad, and the Delaware, Lackawanna & Western Railroad. It was rolled into Conrail in 1976, and most rolling stock was repainted and re-stenciled into the Conrail paint scheme.



**#073 00 610...\$28.90**

**Atchison, Topeka and Santa Fe**  
Road Number 274671



This 40' boxcar was built in 1946 by Pullman-Standard for the Atchison, Topeka & Santa Fe. It was classed Bx-48 and featured an improved dreadnaught end design. Founded in 1859, Santa Fe was one of the largest railroads in North America up until 1996, when it merged with Burlington Northern to form BNSF.



**#073 00 600...\$28.90**

**Alaska Railroad**  
Road Number 2323



Alaska Railroad is a Class II railroad that was founded in 1914, and was completed in 1923. It currently runs between Seward and Fairbanks along 656 miles of track. The ARR serves numerous communities with both freight and passenger service to this day, and is a major tourist attraction in the summer months. In 2023, the ARR celebrated 100 years of operation.



**Available Mid-Month**  
Pre-ordered August 2023  
**#104 00 140...\$28.95**

*Rendering shown for representation.*

**War of the Worlds Loco and Caboose**



**War of the Worlds Loco**  
Road Number 63  
**#987 01 913...\$124.95**



**War of the Worlds Caboose**  
Road Number 480  
**#100 00 600...\$34.95**

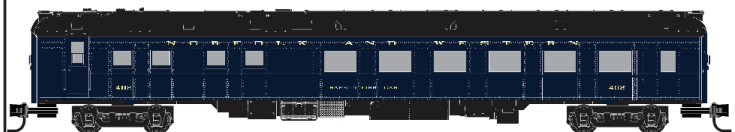
**Z-scale will be available January**  
*Rendering shown for representation. Multi-media kit.*

**Available Mid-Month**  
Pre-ordered August 2023

**Norfolk & Western Safety Car**



Norfolk and Western Car # 402 was an important part of the N&W's safety and accident prevention program. This Safety-First Car consistently traveled all over railroad educating thousands of employees every year on accident prevention.



**Available Mid-Month**  
Pre-ordered July 2023  
**#146 00 540...\$33.90**

*Rendering shown for representation.*



**Wescott & Winks**  
Road Number 1043



Frank Wescott and Ben Winks formed a partnership in 1903, founding the Wescott & Winks Packers and Shippers company, out of Sumner, Iowa. The W&W company specialized in produce, butter, eggs, poultry and various grains. This 36' wood sheathed reefer was built in 1927 and advertised W&W special selected eggs.



**Poultry & Egg Series #1**  
#518 00 860...\$29.95

**Grain Elevator Kit**



This structure kit is modeled after a small town enclosed grain elevator. At some point a surplus boxcar was mounted on a pad and a simple wooden building built around it. This multi-media kit features laser board construction with 3D printed detail parts, and includes a weathered boxcar shell to complete the scene. The kit is designed for both truck serve or rail serve depending on your layout.



**Not on Standing Order**  
#499 00 104...\$28.95

*Undecorated, Multi-media kit.*

**50' Flat Car Loads**



These heavy castings are used on top of the towers of suspension bridges to hold the main cables in place.



**Cable Suspension Guide 2-Pack**  
#499 45 016...\$12.95

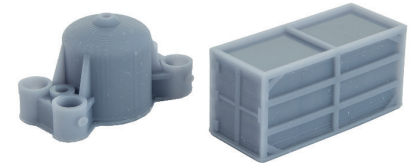
*Undecorated, 3D Printed Load.*

Impellers are used in dams to help produce hydroelectric power.



**Hydroelectric Impellers 2-Pack**  
#499 45 017...\$12.95

The American steel industry manufactures large heavy castings for all sorts of industrial applications. This load features both a forged steel cap and a crate with assembly supplies.



**Foundry Casting & Crate**  
#499 45 018...\$12.95

**Not on Standing Order**

**November Weathered Cars**



**Cargill Inc.**  
Road Number 16014  
#110 44 611...\$38.95



**Cargill Inc.**  
Road Number 16261  
#110 45 612...\$38.95



**ATSF Weathered 2-Pack**  
Road Numbers 50773, 50798  
**Packaged in Foam Nest** #993 05 063...\$59.95  
**Packaged in Jewel Case** #983 05 063...\$68.95

# Southern Pacific® Overnight 8-Pack



Southern Pacific's "Overnight" cars were all steel box cars with steel wheels that were designed to carry less-than-car-load freight at passenger train speeds. Southern Pacific kept train stops to a minimum by only switching out cars at limited "break-bulk" stations where shipments could be moved to company-owned trucks for transfer to intermediate stations. The company also pioneered the practice of teletyping waybills ahead of car arrivals in-order to expedite the handling of shipments at their destinations.



**Available Mid-Month**  
Pre-ordered July 2023

**Packaged in Foam Nest #993 00 827...\$214.95**  
**Packaged in Jewel Case #983 00 827...\$244.95**

SP® is a registered trademark of the Union Pacific Railroad. Rendering shown for representation.

# Trinity Industries Leasing 56' Tank 3-Car Pack



Trinity Industries Leasing Company series 251118-251523 tank cars were built by Trinity Rail. These 100 ton cars feature Barber roller bearing trucks and reflect transportation of a product from Ag Processing Inc. AGP is a U.S. agribusiness leader in soybean processing and refining. AGP began in 1983 and continues to be a growing and successful company in the U.S. and internationally.



**Available Mid-Month**  
Pre-ordered July 2023

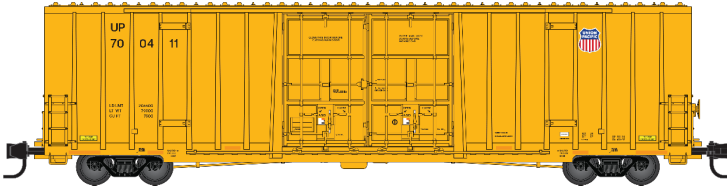
**Packaged in Jewel Case #983 00 218...\$119.95**

Rendering shown for representation.

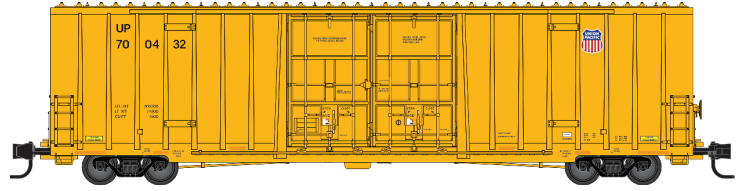


# Union Pacific® 60' High-Cube Box Cars

Accepting Pre-Orders Through December 31st



Road Number 700411  
#123 00 101...\$51.98



Road Number 700432  
#123 00 102...\$51.98

UP® is a registered trademark of the Union Pacific Railroad. Renderings shown for representation.

**Available April and May 2024**

# Kansas City Southern 60' High-Cube Inspection Car

Accepting Pre-Orders Through December 31st



This ex-AOK 7550 cubic-foot boxcar was recently rebuilt into a track geometry inspection car with solar panels on the roof. This is an automated car outfitted with various sensors to examine track conditions such as position, curvature, alignment, smoothness, track gauge, as well as defects such as incorrect rail profile, rail warp, and other parameters. It can then record and transmit this data in detail and mark areas needing repair or adjustment.



Renderings shown for representation.  
Modeler installed, laser cut solar panel included.

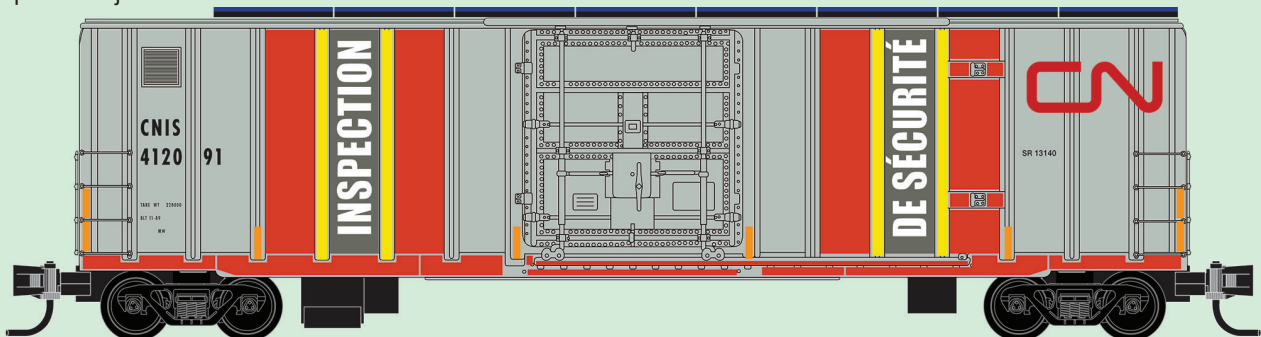
**Available May 2024**  
#123 00 090...\$53.98

# Canadian National Inspection Car

Accepting Pre-Orders Through December 31st



This Canadian National boxcar was recently rebuilt into a track geometry inspection car with solar panel's on the roof. This is an automated car outfitted with various sensors to examine track conditions such as position, curvature, alignment, smoothness, track gauge, as well as defects such as incorrect rail profile, rail warp, and other parameters. It can then record and transmit this data in detail and mark areas needing repair or adjustment.



Rendering shown for representation.  
Modeler installed, laser cut solar panel & multi-media underframe sensors included.

**Available May 2024**  
#027 00 500...\$35.95

# Railbox 4-Car Runner Pack



## Accepting Pre-Orders Through December 31st

In 1974 the TTX company formed a subsidiary, American Rail Box Car Company, to manage a pool of free-running 50' box cars bearing ABOX and RBOX reporting marks. This fleet of leased box cars could be freely assigned to railroads as needed, circumventing ICC directives to move empty cars in the direction of their owning roads. Railbox relied on individual guarantees from railroads to repair tracks and made use of contract repair facilities throughout the country to maintain the cars. The company also employed a variety of builders to construct the cars which were equipped with standardized, readily available parts in-order to simplify maintenance.



**Available May 2024**

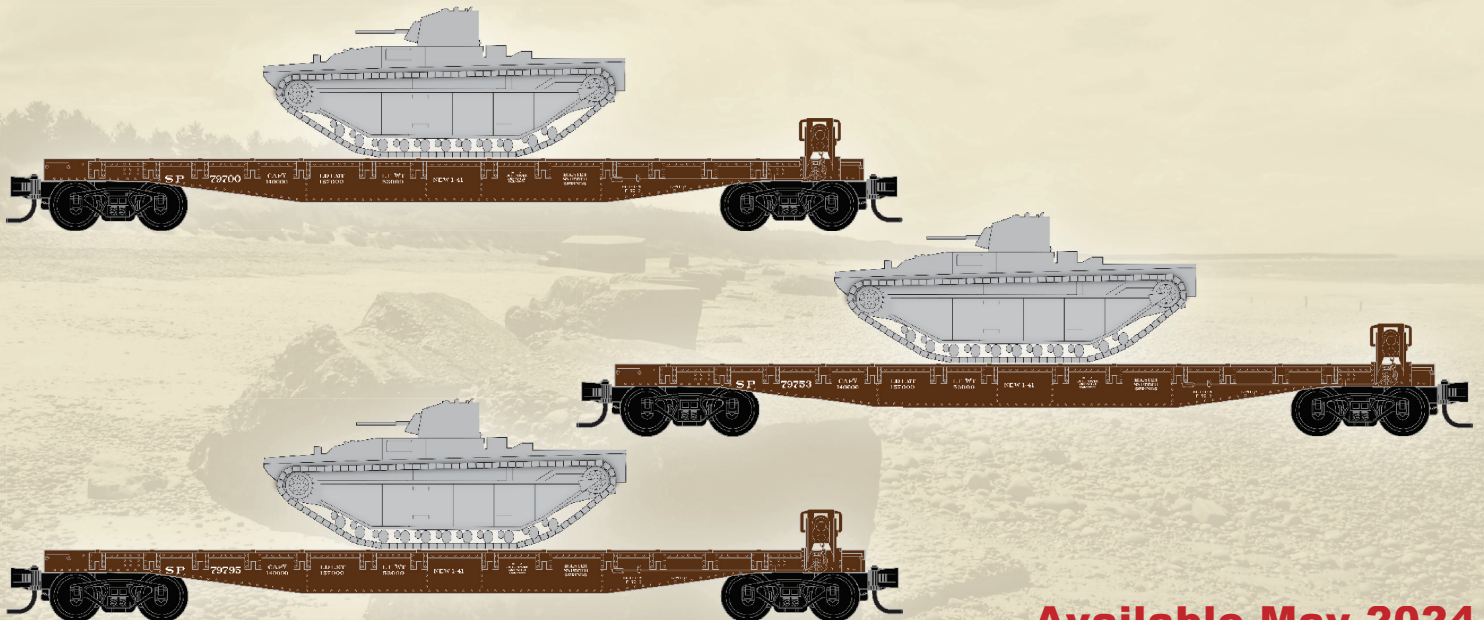
Packaged in Foam Nest #993 00 223...\$124.95  
Packaged in Jewel Case #983 00 223...\$139.95

# Southern Pacific® Flat Car with LVT(A)1 Load



## Accepting Pre-Orders Through December 31st

These Southern Pacific class F-70-2 50' flat cars were built in early 1941 by the Sacramento General Shops. The 70-ton cars in series 79700-79824 feature Bettendorf trucks and carry a military load representing the Landing Vehicle Tracked Amphibious Vehicle. The LVT(A)1 was an amphibious vehicle capable of transporting 18 men or over 2 tons of equipment. Built in 1941 originally to carry supplies, its potential use as an assault support vehicle was soon recognized and subsequently rolled out in 1942.



**Available May 2024**

Packaged in Foam Nest #993 02 245...\$89.95  
Packaged in Jewel Case #983 02 245...\$101.95

SP is a registered trademark of the Union Pacific Railroad.  
Rendering shown for representation. Unassembled undecorated, multi-media Kit.



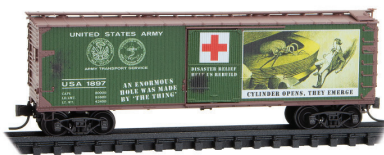
# Rolling Stock Review



## War of the Worlds Series



40' Wood Sheathed Boxcar, Single Door,  
w/ Vertical Brake Wheel  
**N War of the Worlds #1 Rd# 1896 (03/23)**  
Item# 039 00 270..... \$26.95



40' Wood Sheathed Boxcar, Single Door,  
w/ Vertical Brake Wheel  
**N War of the Worlds #2 Rd# 1897 (04/23)**  
Item# 039 00 271..... \$26.95



40' Wood Sheathed Boxcar, Single Door,  
w/ Vertical Brake Wheel  
**N War of the Worlds #4 Rd# 1898 (06/23)**  
Item# 039 00 272..... \$26.95



40' Wood Sheathed Boxcar, Single Door,  
w/ Vertical Brake Wheel  
**N War of the Worlds #5 Rd# 1899 (07/23)**  
Item# 039 00 273..... \$26.95



40' Wood Sheathed Boxcar, Single Door,  
w/ Vertical Brake Wheel  
**N War of the Worlds #6 Rd# 1900 (08/23)**  
Item# 039 00 274..... \$26.95



40' Wood Sheathed Boxcar, Single Door,  
w/ Vertical Brake Wheel  
**N War of the Worlds #8 Rd# 1901 (10/23)**  
Item# 039 00 270..... \$26.95



70' Warren Circus Flat Car  
**N War of the Worlds #9 Rd# 1896 (11/23)**  
Item# 139 00 033..... \$28.95

## Medford, Talent, & Lakecreek RR 30's-50's



40' Standard Box Car, Plug Door  
**MT&L Pear Rd# 39014 (01/23)**  
Item# 021 50 621..... \$27.95



40' Standard Box Car, Plug Door  
**MT&L Tomato Rd# 39032 (01/23)**  
Item# 021 50 622..... \$27.95



40' Wood Sheathed Reefer,  
w/ Vertical Brake Wheel  
**MT&L Topsy Bee Rd# 5870 (07/23)**  
Item# 049 00 941..... \$28.95



40' Wood Sheathed Reefer,  
w/ Vertical Brake Wheel  
**MT&L Golden Bosc Rd# 5859 (07/23)**  
Item# 049 00 942..... \$28.95



40' Wood Sheathed Reefer,  
w/ Vertical Brake Wheel  
**MT&L Pinnacle Pears Rd# 5863 (07/23)**  
Item# 049 00 943..... \$28.95



40' Wood Sheathed Reefer,  
w/ Vertical Brake Wheel  
**MT&L Sunday Best Pears Rd# 5866 (08/23)**  
Item# 049 00 944..... \$28.95



40' Wood Sheathed Reefer,  
w/ Vertical Brake Wheel  
**MT&L Round Robin Pears Rd# 5869 (08/23)**  
Item# 049 00 945..... \$28.95



40' Wood Sheathed Reefer,  
w/ Vertical Brake Wheel  
**MT&L Dunbar Pears Rd# 5857 (08/23)**  
Item# 049 00 946..... \$28.95



33' Twin Bay Hopper, Offset Sides  
**MT&L Hopper Rd# 7343 (02/23)**  
Item# 055 50 620..... \$25.95



FT Locomotive  
**MT&L Loco (06/22)**  
Item# 987 50 695..... \$119.95

# MICRO-TRAINS<sup>®</sup> LINE

351 Rogue River Parkway  
P.O. Box 1200  
Talent, OR 97540-1200  
U.S.A.  
Email: [mtl@micro-trains.com](mailto:mtl@micro-trains.com)

## First Class



Manufacturer and Distributor of  
Quality Model Railroad Equipment

©2023 Micro-Trains Line Co. • 351 Rogue River Parkway • P.O. Box 1200 • Talent, OR 97540-1200 U.S.A. • 541.535.1755 • Fax: 541.535.1932  
Email: [mtl@micro-trains.com](mailto:mtl@micro-trains.com) • Visit us at: [www.micro-trains.com](http://www.micro-trains.com)

The B&O, Seaboard Air Line, Seaboard Coast Line, Chessie, Chesapeake & Ohio, Louisville and Nashville, and Western Maryland are the property of CSX Transportation Inc.



## Membership has its benefits!

If you are an N Scale Enthusiast, and every Ntrakker is – You should share your passion for your favorite scale by being a member of The N Scale Enthusiast!

Working to preserve the history of N Scale, and grow the scale along with our friends at Ntrak, we offer mega benefits to the membership:

- A very informative magazine 5 times a year!
- Manufacturers and Latest releases in every issue
- Member only Special Runs both prototype and fantasy
- Multi Medium Special Runs that are scratch-built on a grand scale
- Member listings in the Trovestar peer to peer marketplace
- Annual Membership car included at no extra charge
- National N Scale Convention annually
- Free Classified Ads- For Sale and Wanted listings
- Web Resources



The N Scale Enthusiast  
P.O. Box 30489  
Savannah, GA 31410

[www.NScaleEnthusiast.com](http://www.NScaleEnthusiast.com)

Join up for more  
N Scale Fun!



### 30<sup>TH</sup> NATIONAL -N- SCALE- CONVENTION

**BETHLEHEM, PA**

**JUNE 18 - 23 - 2024**

## Union Pacific® ArroWedge®



Developed by Union Pacific® in 2013, the Arrowedge® is designed to improve the aerodynamic drag of double-stack trains and have a positive environmental impact during operations. At 48' long, this tapered housing fits on top of the lead well car container and its efficiencies result in a decreased amount of locomotive power necessary to pull a train, lower fuel costs, and less exhaust.



**NEW ROAD NUMBER**

**Available Mid-Month**

Pre-ordered July 2023

**#499 00 103...\$24.95**

UP® is a registered trademark of the Union Pacific Railroad.  
Multimedia kit with waterslide decals,  
comes undecorated and unassembled.