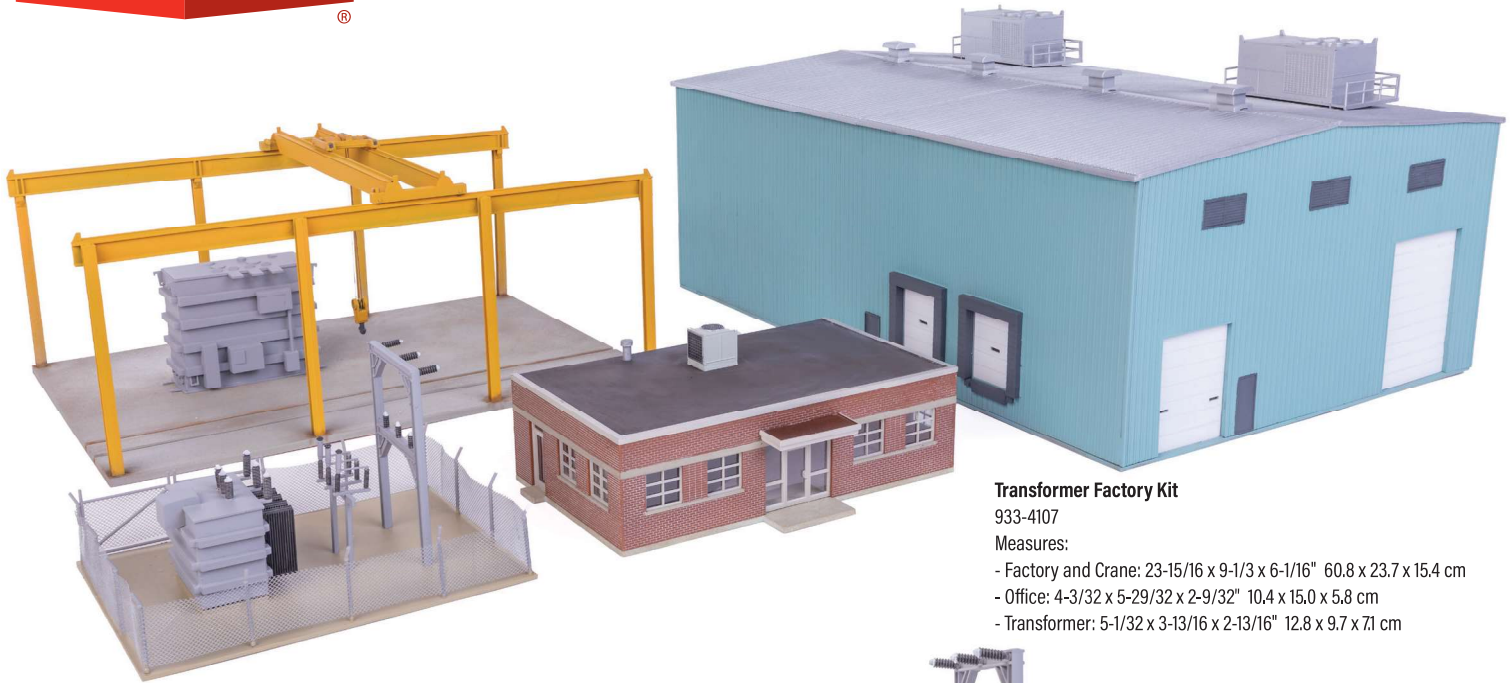




SCALE	ANNOUNCED	EXPECTED DELIVERY
H0	October 2024	Winter 2025

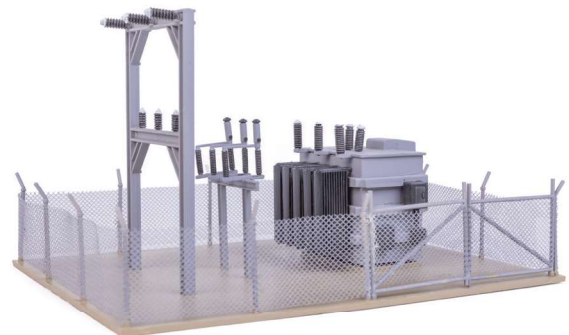


Transformer Factory Kit

933-4107

Measures:

- Factory and Crane: 23-15/16 x 9-1/3 x 6-1/16" 60.8 x 23.7 x 15.4 cm
- Office: 4-3/32 x 5-29/32 x 2-9/32" 10.4 x 15.0 x 5.8 cm
- Transformer: 5-1/32 x 3-13/16 x 2-13/16" 12.8 x 9.7 x 7.1 cm



Yard Details - Transformer Factory

\$99.98 Each

- Roof-mounted cooling system
- Large overhead crane for loading and unloading
- Molded in six colors
- Transformer load included
- Thread, nylon tulle, iron wire and cast metal hook included
- Great destination for those depressed-center flat cars (sold separately)
- Shown assembled, painted and weathered by modeler.