

The

**MICRO-
TRAINS®
LINE**

Micro-News®

February 2025



TTX

Road Numbers 97423, 97451



This TSH60A-class 60' Thrall flatcar with ASF Ride Control trucks was designed to haul large farm, industrial and construction equipment and machinery. With a wood deck and tie-down channels, the cars can be used for a number of other purposes, including hauling structural steel shapes and other bulky industrial loads. With an HTTX reporting mark, these TTX-owned flat cars were built in 1974 by Thrall. TTX was established in 1955 as "Trailer Train," and as their business evolved simply became "TTX" in a 1991 rebranding effort.



#134 00 031...\$34.95

#134 00 032...\$34.95

Union Pacific®

Road Number 260177



Built in 1988 for Union Pacific, this class F-100-38 centerbeam flatcar with Barber Roller Bearing trucks has a 263,000-pound gross weight and is used for carrying heavy finished wood loads, like plywood. With bulkheads on each end to prevent acceleration or deceleration load-shifting, the car design also features a centerbeam structure, which provides both lateral stability and support for shipment as well as simplifying loading and unloading cargo.



UP is a registered trademark of the Union Pacific Railroad.

#053 00 760...\$34.95

Ladoga Canning – Lovers Brand

Road Number 14245



Refrigerator Line owned reefer with Bettendorf trucks was leased to Ladoga Canning Company of Indianapolis, Indiana, and featured Lovers Brand New England Style Beans & Pork. The Ladoga Canning Company was founded in 1903 by brothers Harold and Clay Bachelder. Ladoga specialized in tomato and bean products, but also offered products like pumpkin, sugar corn, and a variety of soups.



#049 00 990...\$29.95

Atchison, Topeka & Santa Fe

Road Number 999088



Built in the late 1960s by the ATSF Topeka Shops, this CE-1 caboose was rebuilt in the early 1980s and modernized with additional amenities for crews, including a refrigerator and new seating areas. Also, at this time, it was painted in the short lived SPSF red and yellow paint scheme with only the SF ever being painted.



#100 00 620...\$36.95

FCCM/ex-Ashley Drew & Northern

Road Number 161245



Ashley, Drew and Northern was a short line logging railroad founded in 1905 in eastern Arkansas. Pulpwood and paper products became the railroad's staple freight commodity by the mid-1940s. In 1963, Georgia Pacific Paper Corporation purchased the railroad but continued to operate it under the AD&N name until 1995 when it was no longer profitable and was abandoned. The car was later obtained by Ferrocarriles Chiapas-Mayab of Mexico, which was founded in 1999 and operated until 2007.



SIDE B

SIDE A

Ex-Per Diem Car #11

#025 44 591...\$30.95

Accepting Orders for February Releases Beginning Friday, January 31st • All Prices U.S. Dollars

Burlington Northern Western Fruit Express Road Numbers 791, 802



With a mechanically cooled, insulated body, these Burlington Northern Western Fruit Express reefers with Roller Bearing trucks were 2878 cubic feet in capacity. Burlington Northern was formed through the mergers of Great Northern and Northern Pacific in 1970, and then merged with ATSF in 1995 to form BNSF.



#082 00 010...\$29.95

#082 00 011...\$29.95

Seaboard System Road Number 341437



This three-bay hopper with Barber Roller Bearing trucks was built by Bethlehem Steel, in Johnstown, PA in June 1971 for the Louisville & Nashville Railroad. In 1982, the L&N merged with the Seaboard Coast Line and Atlantic Coast Line to form Seaboard System. Seaboard later merged with Chessie System to form CSX.



#108 00 053...\$28.90

New Loads



Underwater Cable Spool Load 2-Pack

Load for 134 Flatcar or similar

#499 45 037...\$14.95



Timber Truss Load 2-Pack

Load for 053 Centerbeam Flatcar or similar

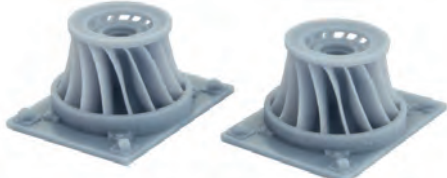
#499 45 038...\$14.95

Available Loads



Combine Corn Heads with Tires Load

#499 45 035...\$12.95



Hydroelectric Impellers Load

#499 45 017...\$12.95



Pulpwood Log Load

#499 45 036...\$16.95



Foundry Casting & Crate Load

#499 45 018...\$12.95

Western Pacific® 4-Car Runner Pack #233



These 40' steel boxcars were built in March 1937 and converted by Western Pacific in 1941 into a less-than-carload express boxcar. It was renumbered into the 220071-220194 series, and equipped with wood running boards and steam lines.



Pre-ordered October 2024

WP® is a registered trademark of the Union Pacific Railroad.

40' Standard Boxcar, Single Door • Rds# 220106, 220108, 220146, 220194

#983 00 233...\$119.95

January Weathered Cars



Western Pacific® Weathered 2-Pack

Road Numbers 21096, 36130

#983 05 087...\$59.95



Procor Weathered Single

Road Number 75374

#110 44 650...\$35.95



Bessemer & Lake Erie/ex-Rock Island Weathered 2-Pack

Road Numbers 50722, 51026

#983 05 085...\$59.95

TTX Flatcar 3-Pack with Bridge Loads



This pack contains two 89' flatcars and a 60' Thrall idler flatcar. An empty idler car is required for extra long shipments such as these large steel sections, which extend beyond the ends of the rail cars.



89' Flatcar w/ Flat Deck



89' Flatcar w/ Flat Deck



60' Wood Deck Modern Flatcar

Pre-ordered October 2024

Rendering shown for representation. Multi-media Kit.

Available Mid-Month

Rd# 942513, 942621, 97355

#983 02 260...\$119.95

Weathered Atchison, Topeka, and Santa Fe Caboose 3-Pack



ATSF cabooses were often rebuilt later in life and modernized with additional amenities for crews, including refrigerators and new seating areas. These cabooses feature different paint schemes to denote type of service. The Mineral Brown paint scheme denoted local service only, the Indian Red scheme with the White Cupola denoted PC radio equipment and/or transfer service, while the all-red caboose was for mainline freight service.



Pre-ordered September 2024

Rendering shown for representation.

36' Riveted Steel Caboose, Offset Cupola • Rd# 999046, 999141, 999643

Available Mid-Month

#983 02 259...\$114.95

Micro-Mouse Mardi Gras



Come join Micro-Mouse in celebrating Mardi Gras this year!



Renderings shown for representation.

Available Mid-Month
60' Boxcar, Excess Height, Double Plug Doors, Rivet Side
#102 00 310...\$28.95

Western Pacific® Bulk Sugar Car 2-Pack



Accepting Pre-Orders Through February 28th

These cars are converted from two Western Pacific boxcars 20356 & 20385 to become closed hopper cars for the specific purpose of hauling bulk sugar. This was done as part of a joint tariff with Southern Pacific as Western Pacific needed equipment to support the arrangement.



Renderings shown for representation. Multi-Media kit. WP® is a registered trademark of the Union Pacific Railroad.

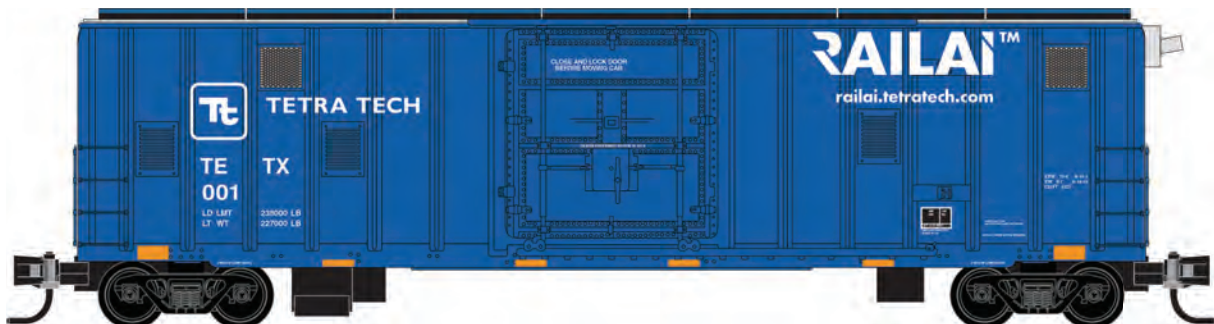
Available July 2025
40' Standard Boxcar, Single Door • Rds# 14601, 14602
#983 02 278...\$59.95

Tetra Tech Test Car



Accepting Pre-Orders Through February 28th

This Tetra Tech "RailAI" track geometry inspection car is automated and outfitted with various sensors to examine track conditions such as position, curvature, alignment, smoothness, track gauge, as well as defects such as incorrect rail profile, rail warp, and other parameters. It can then record and transmit this data in detail and mark areas needing repair or adjustment.



Renderings shown for representation. Multi-Media kit.

Available July 2025
50' Rib Side Boxcar, Single Door, w/o Roofwalk • Rds# 001
#027 00 510...\$35.95

Pennsylvania Railroad MOW 4-Pack

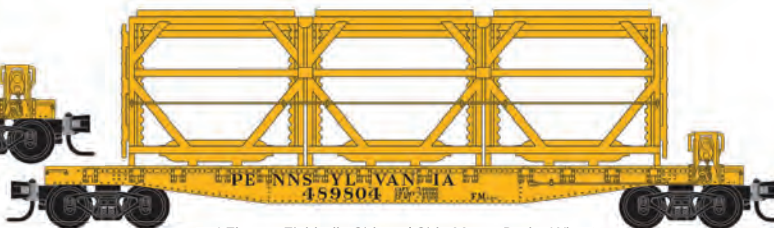
Accepting Pre-Orders Through February 28th



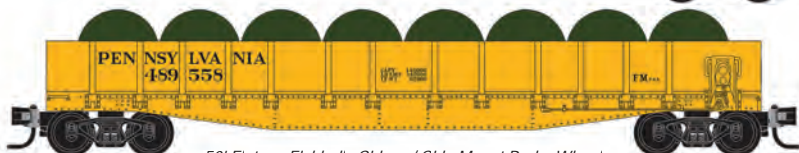
These Pennsylvania Railroad cars were used in the 1930s and 1940s to help maintain and repair the electrified catenary lines that were strung over the track on the Northeast Corridor and other branch lines. The flat cars, called "Tower Cars" had elevating scaffolding to allow workers to reach the wires. A "Riding Car," which was a converted passenger car or self-propelled coach, was also employed with a pantograph to help ensure the lines being worked on were electrically grounded.



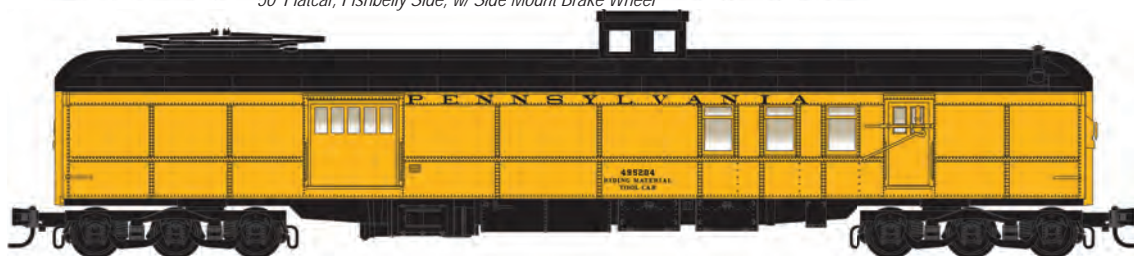
50' Flatcar, Fishbelly Side, w/ Side Mount Brake Wheel



50' Flatcar, Fishbelly Side, w/ Side Mount Brake Wheel



50' Flatcar, Fishbelly Side, w/ Side Mount Brake Wheel



70' Heavyweight Mail Baggage Car

Available July 2025

Rds# 489782, 489804, 489558, 495204

#983 02 277...\$129.95

Rendering shown for representation. Multi-Media kit.

Atchison, Topeka & Santa Fe 4-Car Runner Pack #237

Accepting Pre-Orders Through February 28th



Class GA-183 ACF Centerflow hoppers in series 313800-314799 were built in 1973. These hoppers had a weight capacity of 100 tons. They feature a "Q" for Quality logo, and ride on Barber Roller Bearing trucks.



Available July 2025

3-Bay Covered Hopper, w/ Elongated Hatches • Rds# 314003, 314399, 314400, 314534

#983 00 237...\$134.95

Renderings shown for representation.

HO 2025 Presidential Kit

Short Pre-Order! Order only guaranteed through February 17th!

This 40' box car with plug door and roofwalk representing the 47th president of the United States. It bears the portrait of Donald J. Trump.

**HO
SCALE**



Renderings shown for representation.

Available March 2025
#3100 001...MSRP: \$49.95

GRIT N' GRIME SERIES

AUTHENTICALLY WEATHERED CARS BY

**MICRO-
TRAINS®
LINE**

**HO
SCALE**

HO Kits Still Available



#2200 001
MSRP: \$49.95
Burlington Northern/ex-Frisco
RD# 419321



#2200 005
MSRP: \$49.95
Denver and Rio Grande Western
RD# 10000



#2500 001
MSRP: \$49.95
Norfolk and Western/ex-Virginian
RD# 125134

ACCURAIL®
MADE IN THE USA

MICRO- TRAINS® LINE

351 Rogue River Parkway
P.O. Box 1200
Talent, OR 97540-1200
U.S.A.
Email: mtl@micro-trains.com

First Class

Manufacturer and Distributor of
Quality Model Railroad Equipment

©2024 Micro-Trains Line Co. • 351 Rogue River Parkway • P.O. Box 1200 • Talent, OR 97540-1200 U.S.A. • 541.535.1755 • Fax: 541.535.1932
Email: mtl@micro-trains.com • Visit us at: www.micro-trains.com

The B&O, Seaboard Air Line, Seaboard Coast Line, Chessie, Chesapeake & Ohio, Louisville and Nashville, and Western Maryland are the property of CSX Transportation Inc.



Membership has its benefits!

If you are an N Scale Enthusiast, and every Ntrakker is – You should share your passion for your favorite scale by being a member of The N Scale Enthusiast!

Working to preserve the history of N Scale, and grow the scale along with our friends at Ntrak, we offer mega benefits to the membership:

- A very informative magazine 5 times a year!
- Manufacturers and Latest releases in every issue
- Member only Special Runs both prototype and fantasy
- Multi Medium Special Runs that are scratch-built on a grand scale
- Member listings in the Trovestar peer to peer marketplace
- Annual Membership car included at no extra charge
- National N Scale Convention annually
- Free Classified Ads- For Sale and Wanted listings
- Web Resources



The N Scale Enthusiast
P.O. Box 30489
Savannah, GA 31410

www.NScaleEnthusiast.com

Join up for more
N Scale Fun!



NATIONAL - N - SCALE - CONVENTION



Featured Micro-Trains Authorized Dealers

CENTRAL COAST TRAINS	ATASCADERO	CA	centralcoasttrains.com
RAILMASTER HOBBIES	BELLFLOWER	CA	railmasterhobbies.com
BURBANK HOUSE OF HOBBIES	BURBANK	CA	papabens.com
THE TRAIN SHACK	BURBANK	CA	trainshack.com
MODEL TRAIN SOLUTIONS	CHINO	CA	modeltrainsolutions.net
JUST TRAINS	CONCORD	CA	just-trains.com
Z SCALE HOBO	IRVINE	CA	zscalehobo.com
REED'S HOBBY SHOP	LA MESA	CA	reeds-hobbies.com
LOOSE CABOOSE	NAPA	CA	loosecaboose.com
THE ORIGINAL WHISTLESTOP	PASADENA	CA	thewhistlestop.com
REDDING CENTRAL TRAINS	REDDING	CA	(530)243-1360
RAILROAD HOBBIES	ROSEVILLE	CA	rrhobbies.com
THE TRAIN SHOP	SANTA CLARA	CA	(408) 296-1050
PEGASUS HOBBIES	UPLAND	CA	mrshobby.com
ARNIE'S TRAIN & HOBBIE HSE	WESTMINSTER	CA	www.arniestrains.com